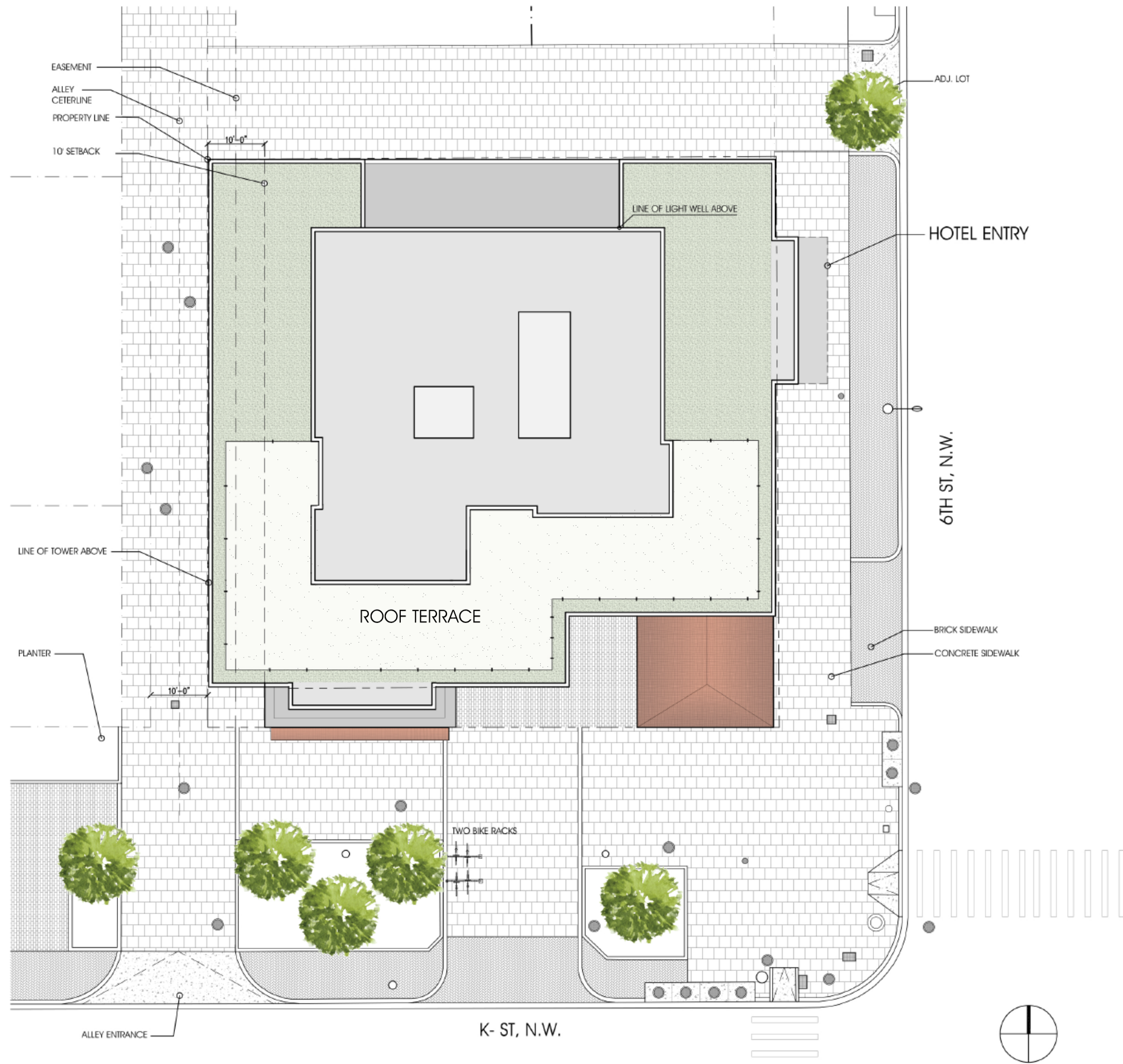


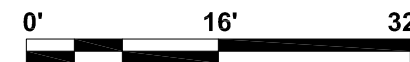
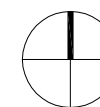
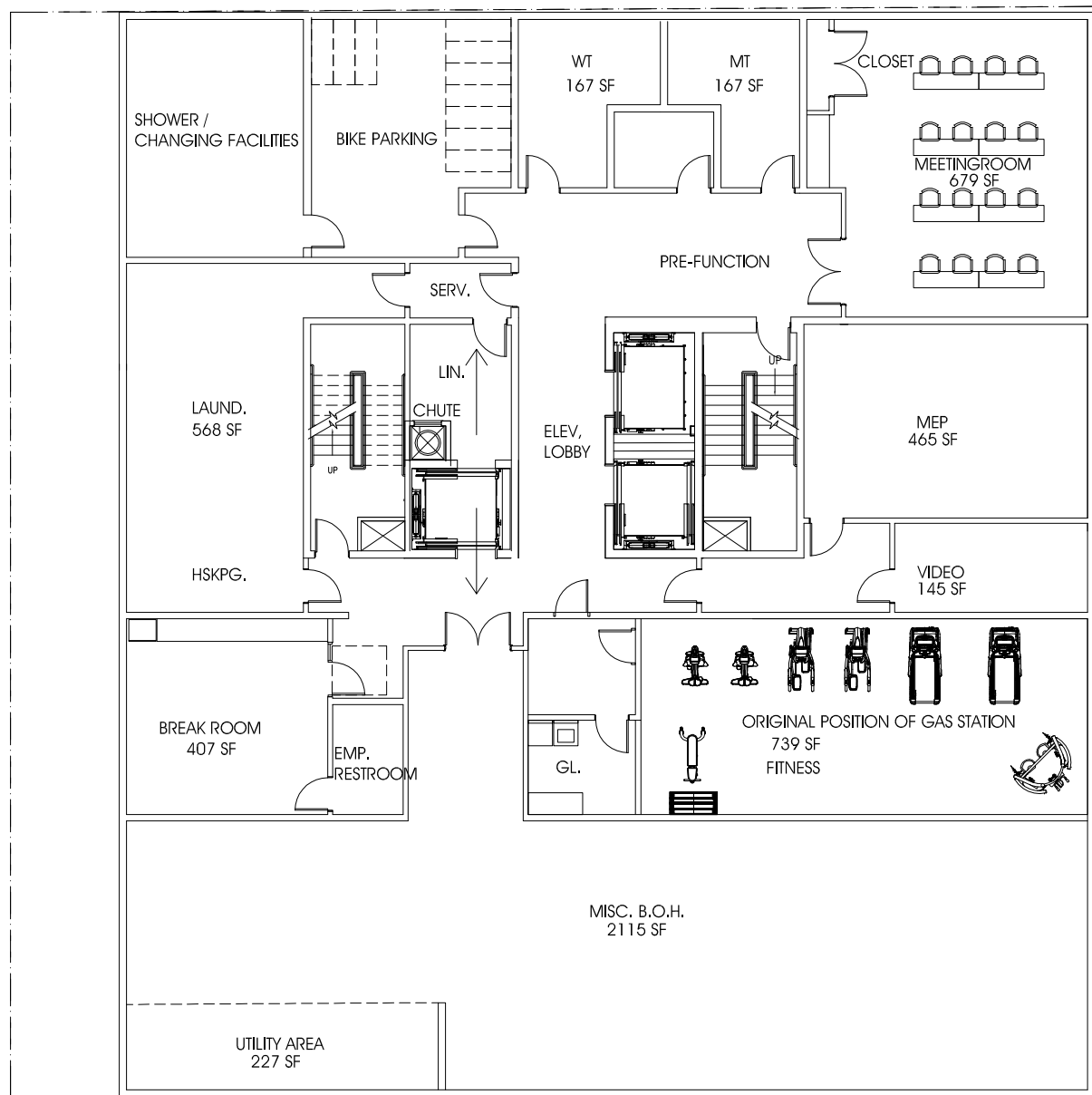
BUILDING PROGRAM	GROSS FLOOR AREA (GFA)
CELLAR	0
GROUND (1ST)	6,648 SF
TYPICAL (2ND-3RD)	13,770 SF
TYPICAL(4TH-13TH)	82,180 SF
PENTHOUSE	0
TOTAL AREA:	102,598 SF (EXCLUDING CELLAR, PENTHOUSE & 4' BAY PROJECTION)
FAR: 10.20 (EXCLUDING CELLAR, PENTHOUSE & 4' BAY PROJECTION)	
SITE AREA	10,011 SF (BASED ON THE ALTA SURVEY CAD FILE)

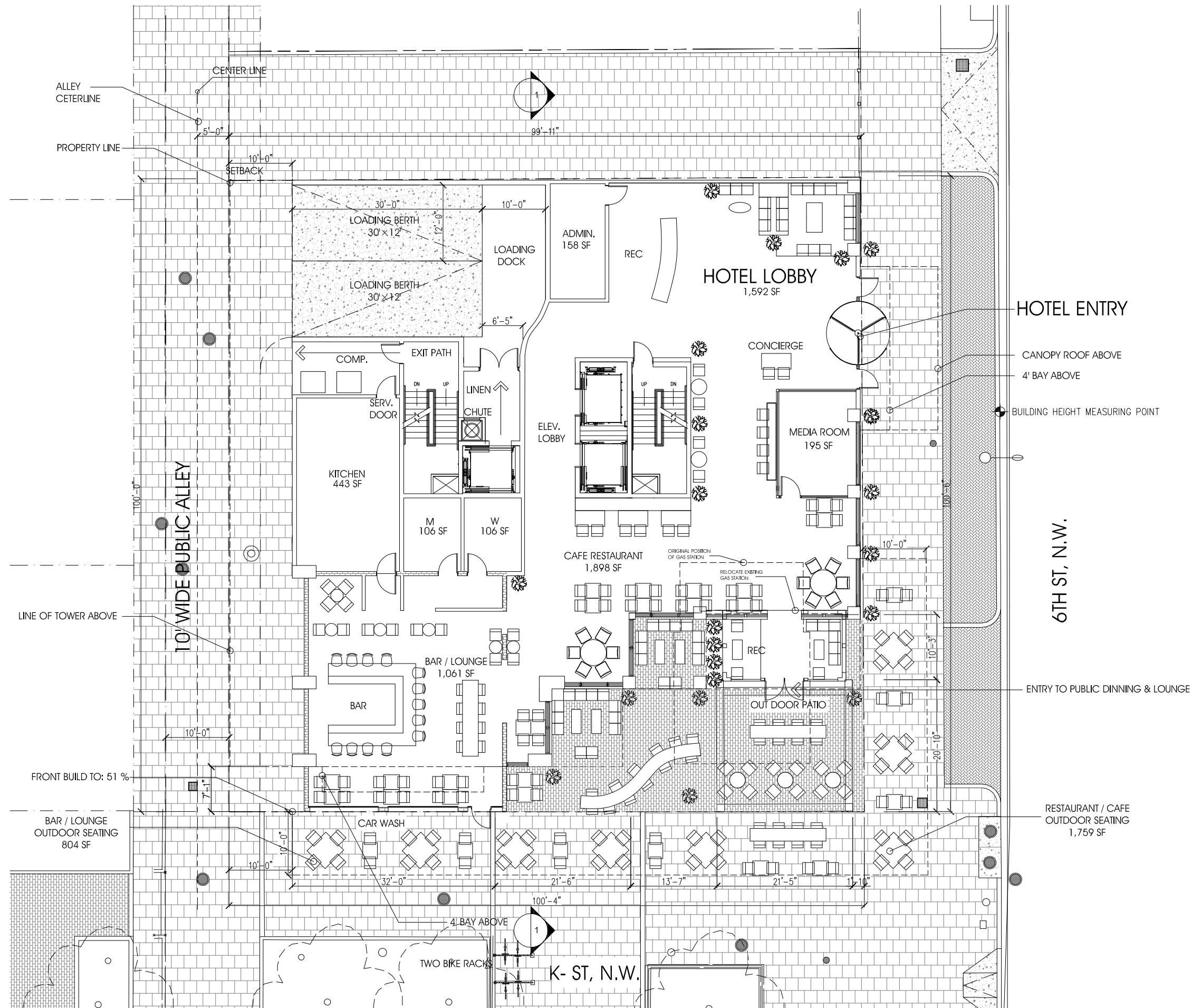
TOTAL GUEST ROOMS : 220

ROOM MIX SUMMARY

KING	130	59%
DQ	54	25%
SUITES	36	16%
TOTALS	220	100%





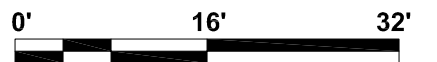
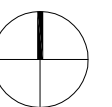
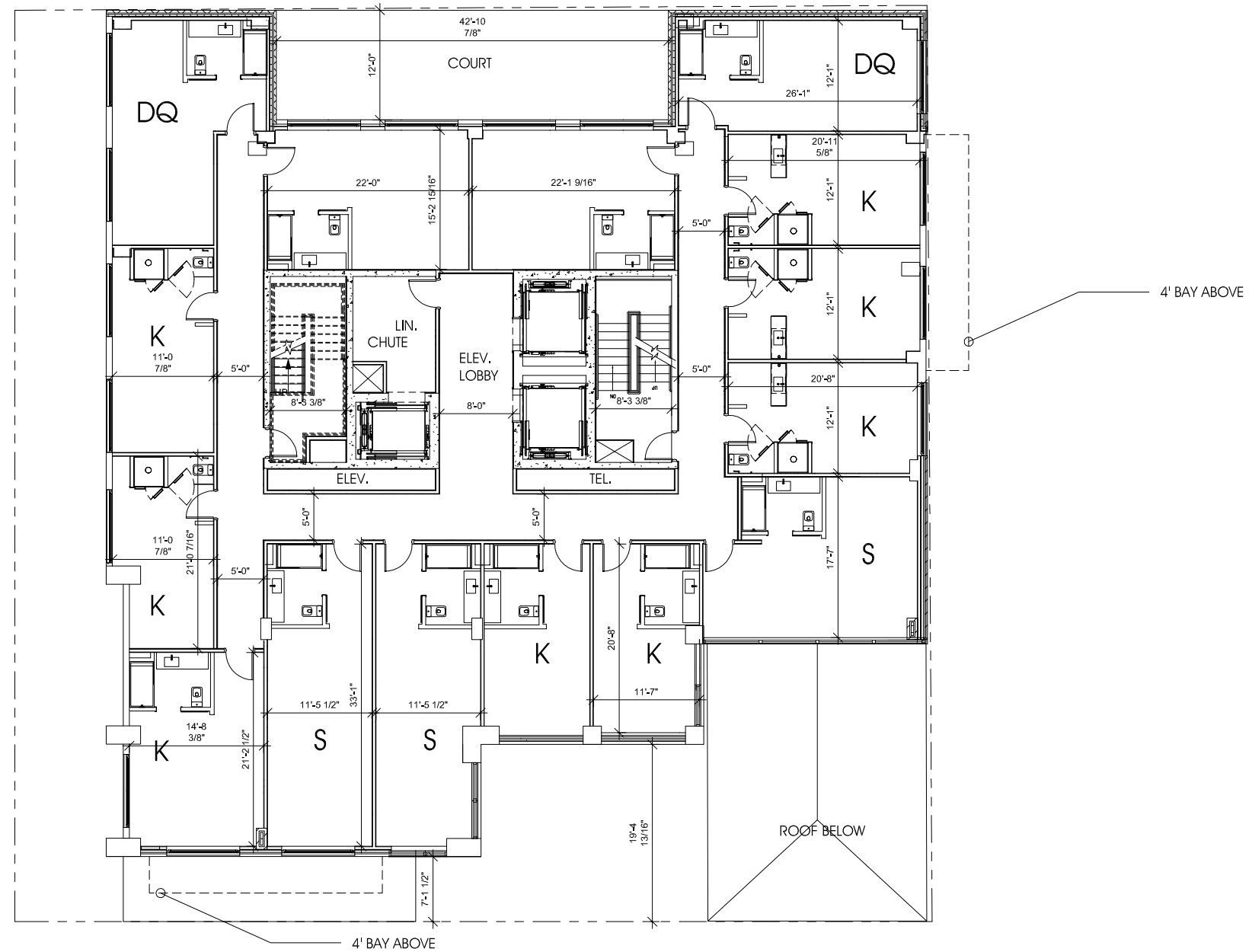


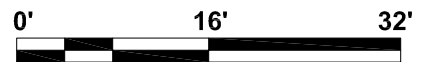
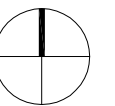
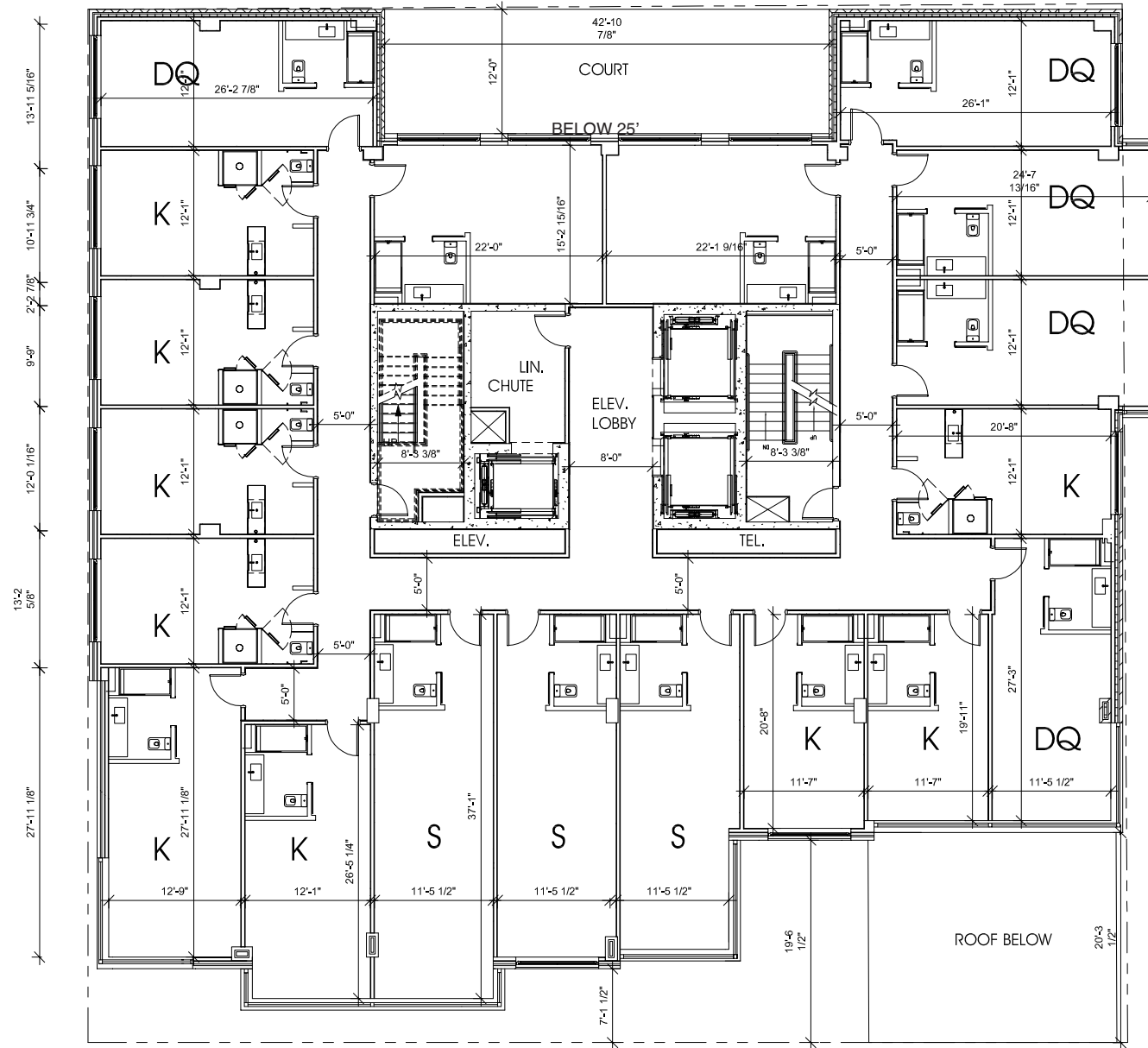
6TH & K HOTEL N.W., WASH. DC
SHEET | A008

GROUND FLOOR PLAN

SCALE: 1/16"=1'-0"
DATE: 07.12.2017





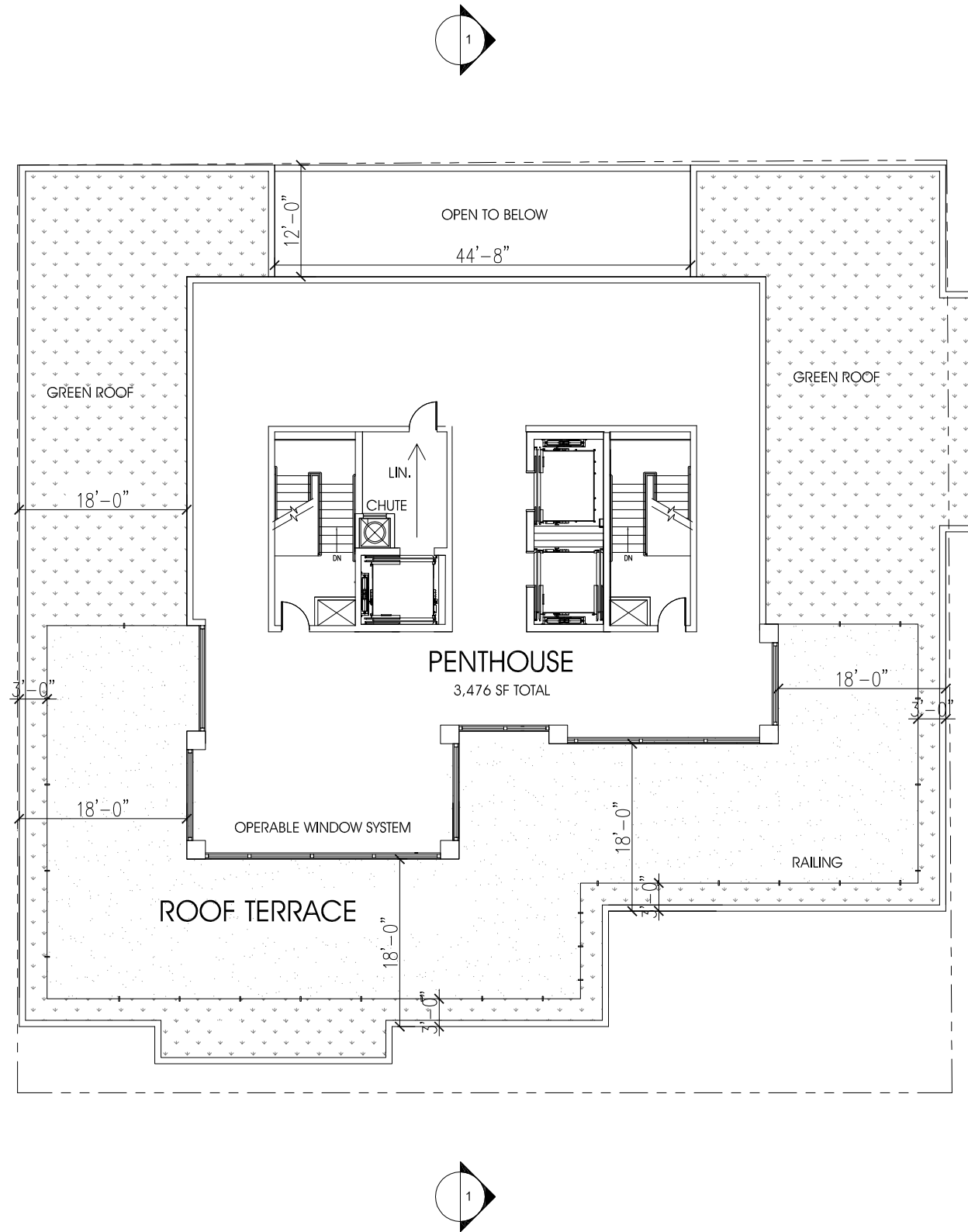


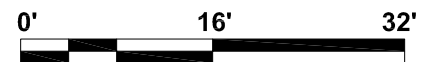
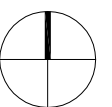
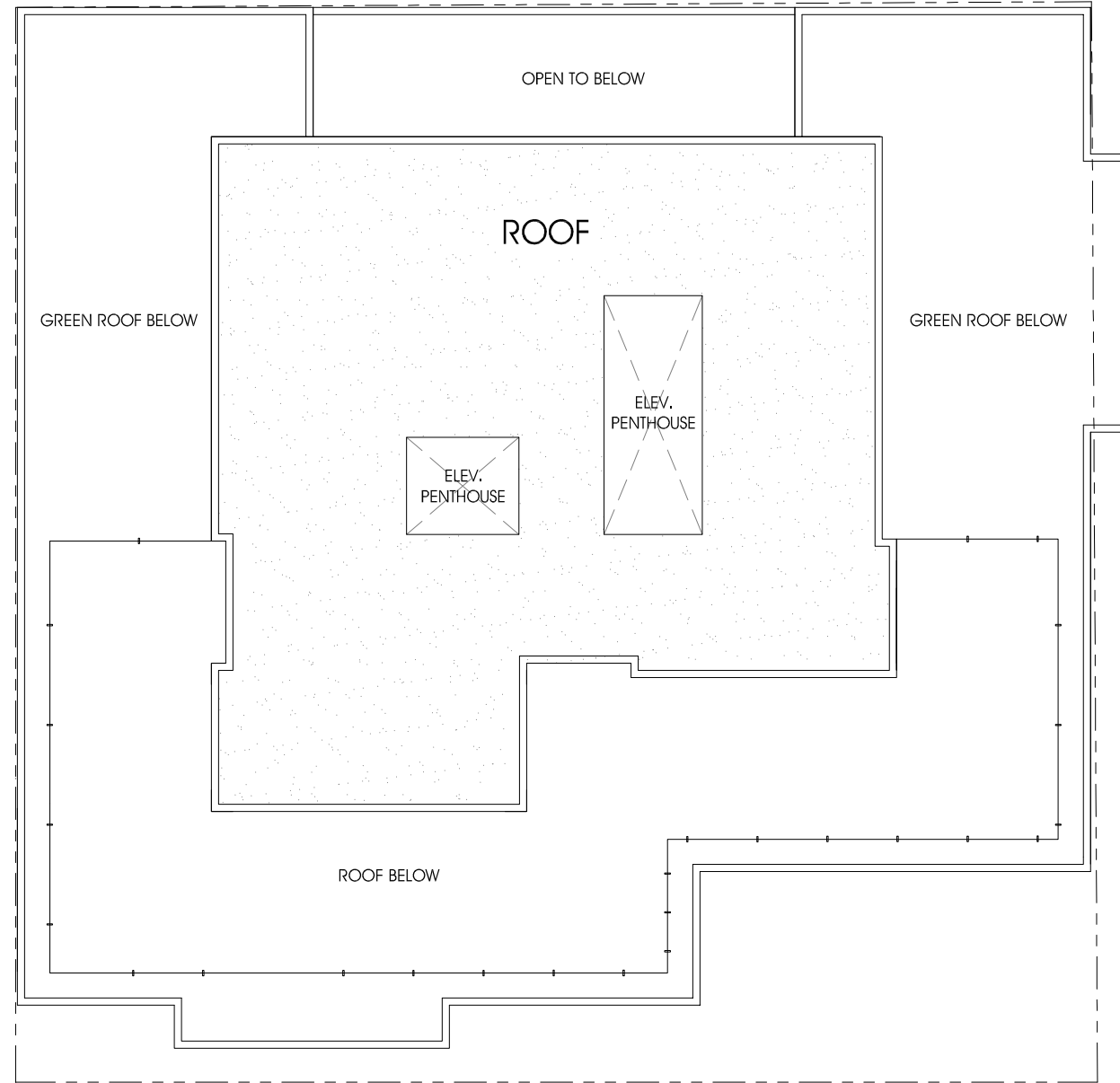
PENTHOUSE AREA SUMMARY

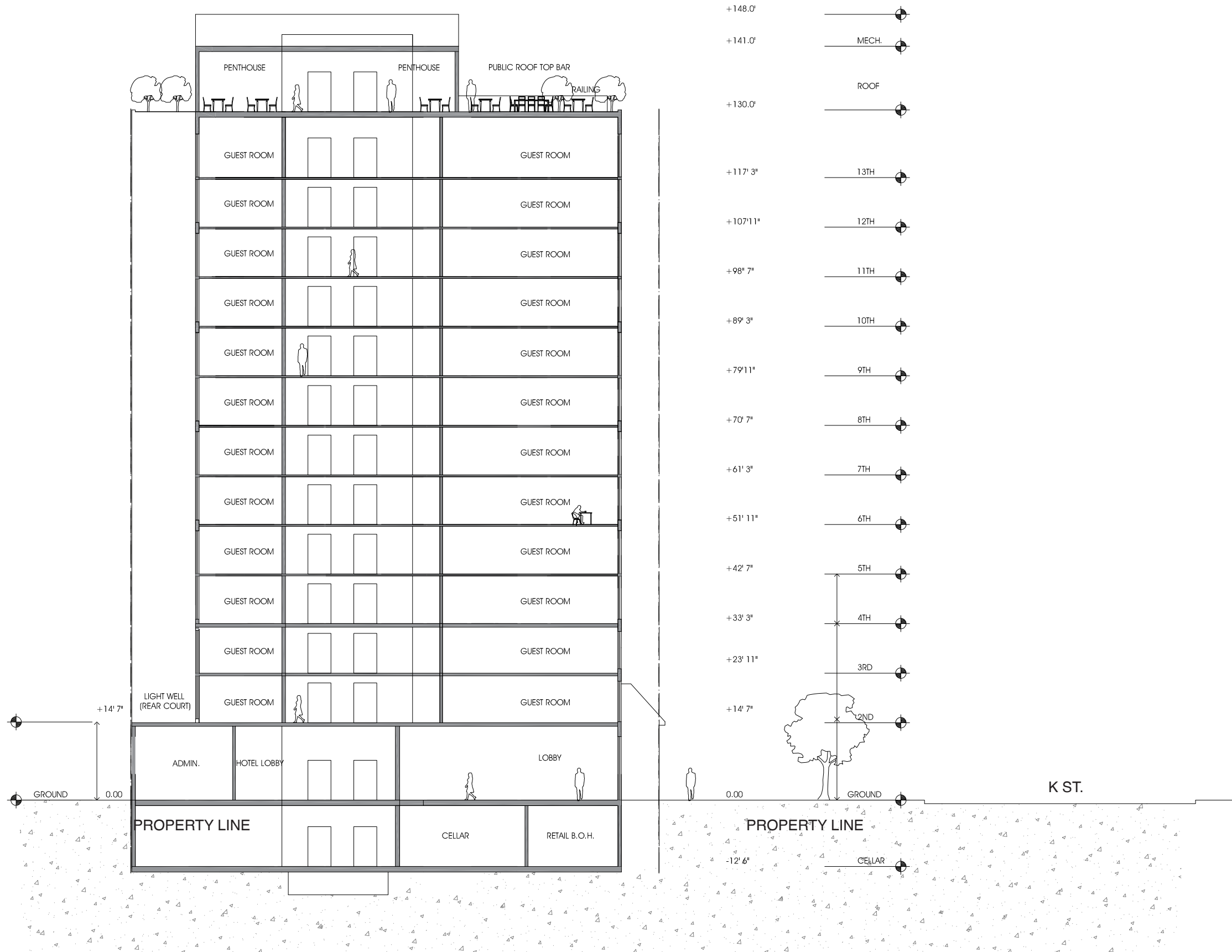
HABITABLE SPACE: 2,412 SF
MECHANICAL: 228 SF
CIRCULATION/EGRESS: 360 SF

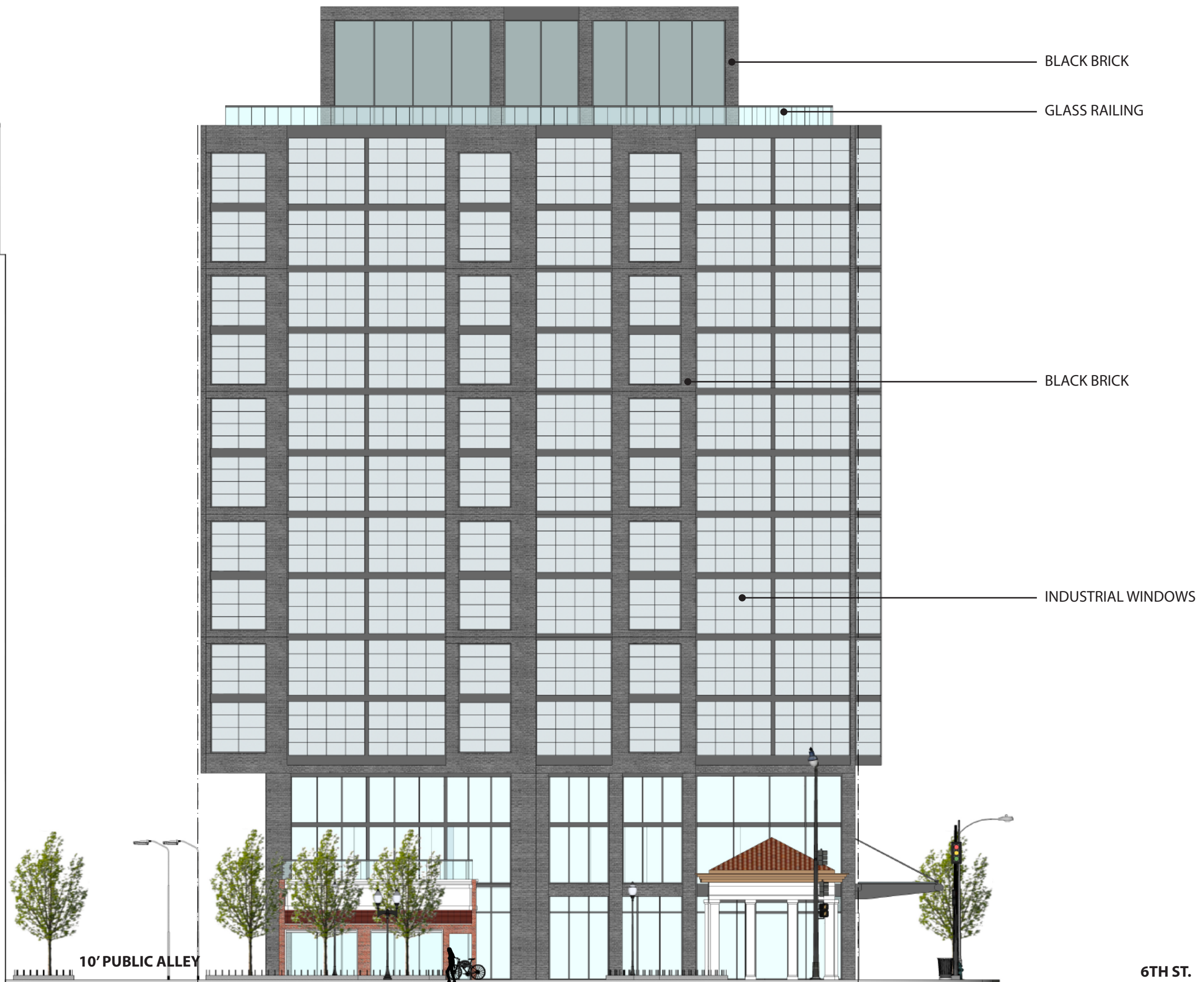
GREEN ROOF: 2,384 SF
EXCEEDS GAR BY 4 %

NOTE: PENTHOUSE INTENDED
FOR PUBLIC ASSEMBLY USE







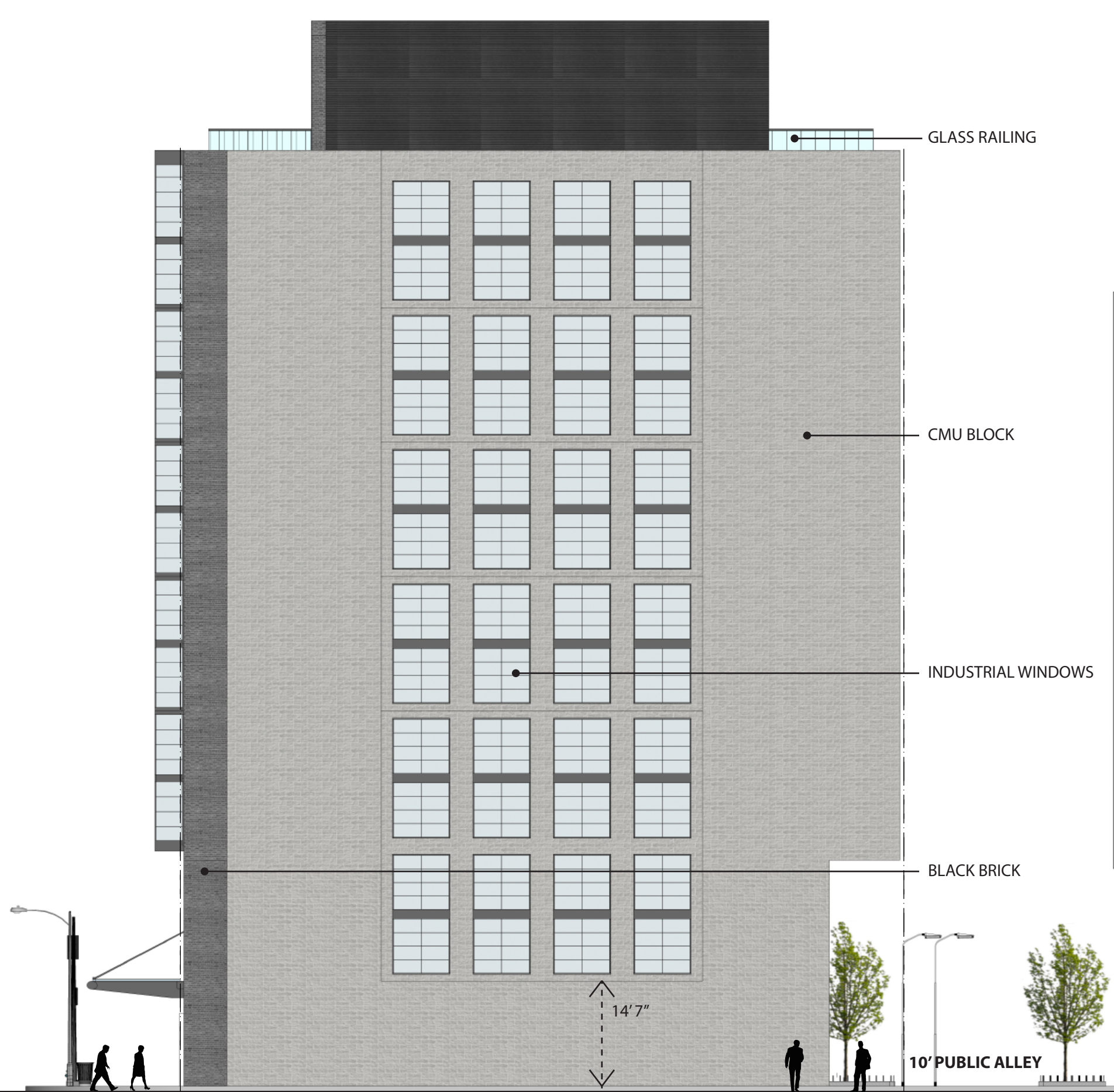


6TH & K HOTEL N.W, WASH. DC
SHEET | A014

SOUTH ELEVATION

SCALE: 1/16"=1'-0"
DATE: 07.12.2017

FILLAT+
ARCHITECTURE



6TH ST.

6TH & K HOTEL N.W, WASH. DC
SHEET | A015

NORTH ELEVATION

SCALE: 1/16"=1'-0"
DATE: 07.12.2017

FILLAT+
ARCHITECTURE

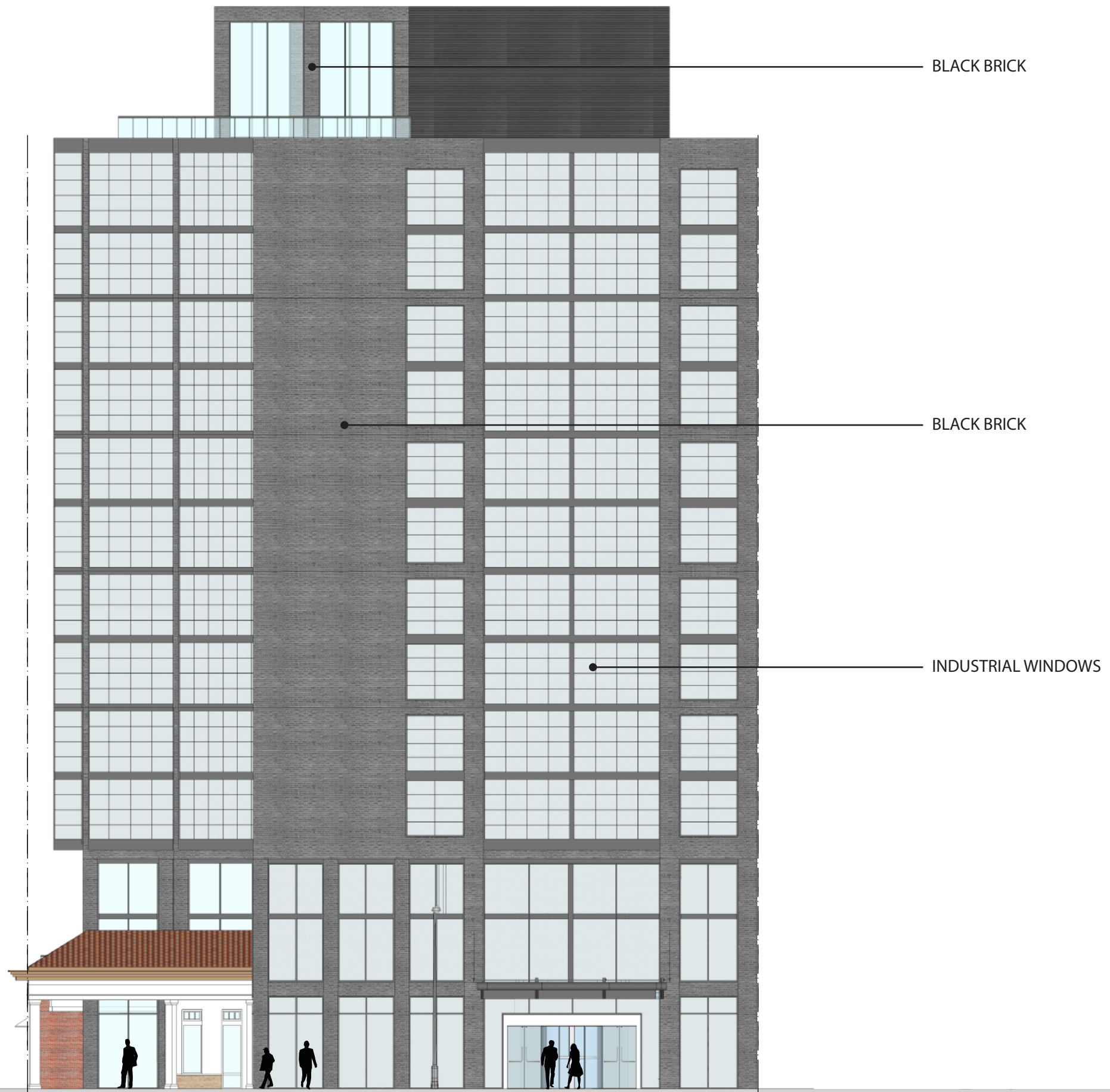
K ST.

6TH & K HOTEL N.W, WASH. DC
SHEET | A016

EAST ELEVATION

SCALE: 1/16"=1'-0"
DATE: 07.12.2017

FILLAT+
ARCHITECTURE





BLACK BRICK

BLACK BRICK

INDUSTRIAL WINDOWS

LOW-E GLASS WINDOWS

K ST.

6TH & K HOTEL N.W, WASH. DC
SHEET | A017

WEST ELEVATION

SCALE: 1/16"=1'-0"
DATE: 07.12.2017

FILLAT+
ARCHITECTURE